



2025 ASLA Florida Design Awards

BIG ARTS SANIBEL



BIG Arts Sanibel is a new performing arts center on a Gulf Coast barrier island designed for coastal adaptation with 100% native island species.



The BIG Arts Sanibel campus is surrounded by highly sensitive wetlands connected to the larger island ecosystems.



**SANIBEL HISTORICAL
MUSEUM AND VILLAGE**
ISLAND COMMUNITY HISTORY
FROM THE CALUSA TO 1800S
PIONEERS

**BIG ARTS PERFORMING
ARTS CENTER**
COMMUNITY ARTS CENTER
PUBLIC MEETINGS
FARMER'S MARKET OVERFLOW
GALLERY
EVENT SPACE

**SANIBEL POLICE
DEPARTMENT**

**SANIBEL
PUBLIC
LIBRARY**

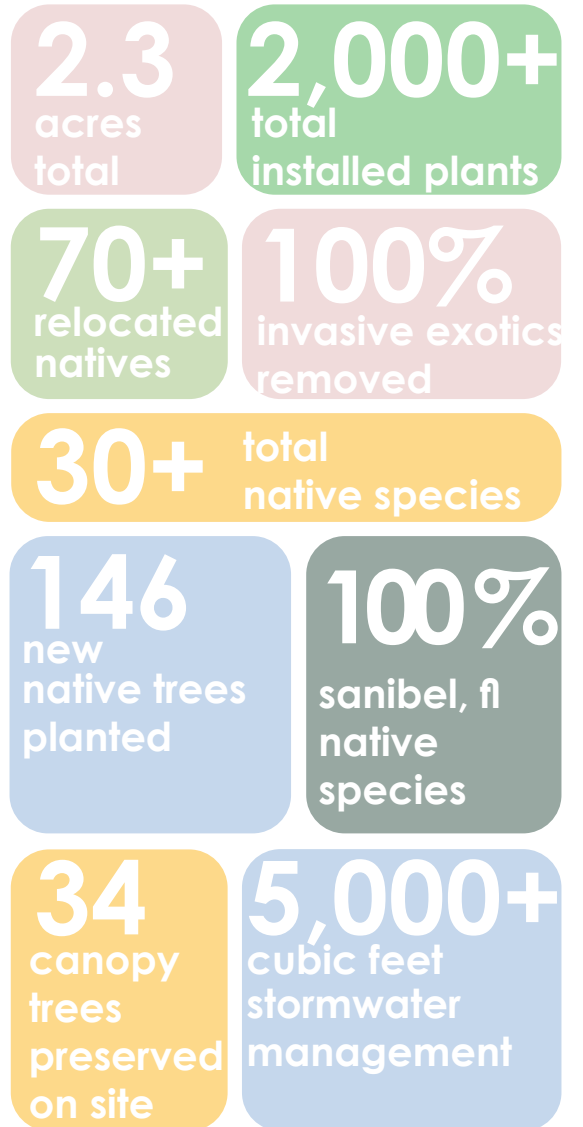
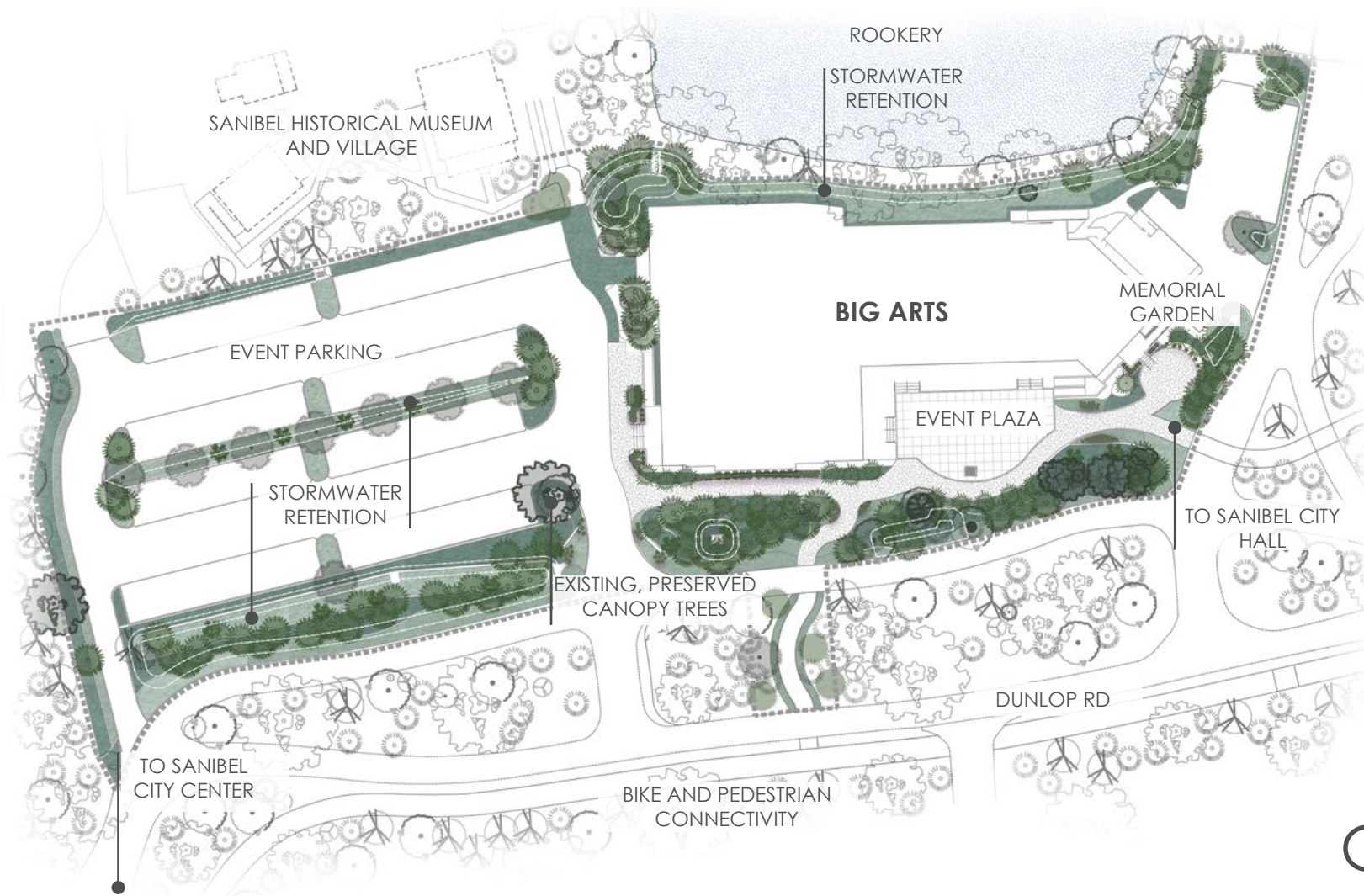
SANIBEL CITY HALL
SITE OF POP UP EVENTS
AND FARMER'S MARKET

**TO SANIBEL
CITY CENTER**

**BELOW MARKET-RATE
WORKFORCE HOUSING**

**BIKE AND PEDESTRIAN
CONNECTIVITY**

BIG Arts Sanibel is part of the civic campus, connecting the island's bike and pedestrian infrastructure to public resources and community events.



Interdisciplinary collaboration with the architect and engineer created a site plan that situates the performing arts center within the environmental and community network.



A strolling sculpture garden opens into an event space for community celebrations, fundraisers, and galas. The winding, canopied paths weave into the greater island bike and pedestrian networks.



Sloped walks connect the event plaza to terraced entrances that provide elevation from increased threat of storm surge.



Approach the events plaza from city hall on a coquina shell path flanked by commemorative stonework embedded within native groundcover species of sunshine mimosa and golden creeper.



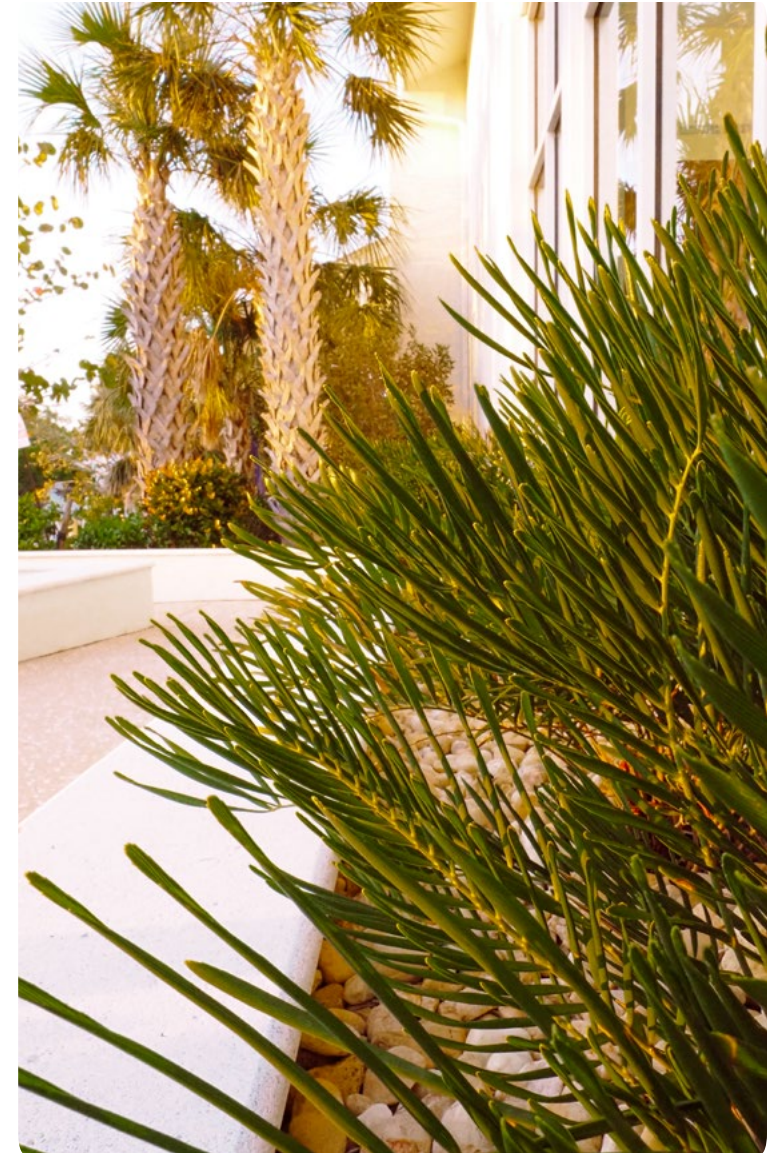
The landscape architect advocated for preservation of specimen canopy trees (*strangler fig*, *gumbo limbo*, *wild tamarind*) that have survived multiple hurricane events, provide habitat for migrating birds and shade pedestrians.



Existing and selected specimen trees buffer the sculpture garden to create green galleries for appreciation of the artwork.



Sculptural sabal palm trunks frame glimpses into the gallery and event spaces. Dark sky friendly site lighting illuminates winding pedestrian pathways on this ecologically sensitive site.



Native groundcover species knit together in green infrastructure: bioswales, stormwater retention areas, and site stabilization.



The green gallery of native sabal and thatch palms protects the building's glass facade from hurricane impacts. The palms have survived 3 major hurricanes in a span of two years.



Due to interdisciplinary coastal adaptation design, this space sustained minimal impacts, allowing BIG Arts Sanibel to function as the heart of the island after Hurricane Ian in 2022.



Causeway Panther, made of salvaged rebar from the damaged causeway after Hurricane Ian, symbolizes the resiliency of Sanibel Island's community.



BIG Arts Sanibel serves as a model of interdisciplinary collaboration for coastal adaptation and long-term performance.